

SUZUKI MUSIC SCHOOL OF WESTPORT

FALL NEWSLETTER

FOR
SNOW CLOSURES VISIT
www.smsw.org or call
(203) 227 9474

OCTOBER 2008

DIRECTOR'S CORNER

A very special and slightly belated welcome to the Suzuki Music School's new Fall 2008 semester! We are pleased to greet over sixty new students this fall - both new families discovering the Suzuki method for the first time and returning families bringing younger siblings to lessons. Whether you are a new parent or a returning parent we welcome you and hope you enjoy a wonderful year of discovery and learning at the school.

This successful enrollment is a testament to the growing role of the school in the wider community. For a ten year old school that does little to no marketing, it is also a huge achievement! The biggest factor in growing our school has consistently been word-of-mouth recommendations from currently-enrolled families to friends and others. We are very grateful for your continued support of our efforts and your enthusiasm for our program!

Now that we've entered such uncertain economic times, it's important to reiterate why Suzuki music is so critical: that the creative life of your child is fundamental to his/her broader educational and

personal development. It's a point that leaders in education have been championing for years. The ideal education teaches the "whole child" stressing the arts in balance with the sciences.

In the hard economic times of today, we should pay attention to our political leaders who point out that in the worst of times it is most vital to our National interests to invest in the educational wellbeing of our children. Even George Washington advised "to encourage literature and the arts is a duty which every good citizen owes his country". In such times, maintaining our arts education is actually vital to our national future. There are many studies to show they are right.

- Studies on the role of arts and civic engagement by the National Endowment for the Arts (NEA) during a 2002 U.S. Census show that those who engage in the arts, attending concerts, listening to the radio and visiting museums, also participate more in sports, volunteer more in the community and are more active with charitable causes.

- A 2006 poll profiling college

bound seniors recorded that students who studied music, annually scored between 50 and 60 points higher in SAT scores on both the verbal and math portions of their test.

- A 2007 Commission on the American Workforce concluded that there was a direct correlation between those individuals who had mastery in the arts and those who secured high earning jobs. This link was acknowledged recently by Siemens Westinghouse, who host a national schools competition in Math and Science. Nearly 100% of the winners played a musical instrument, leading the company to host a winners concert and open discussion on the obvious links between music and science.

Despite the evidence, participation in the arts among children and families has experienced a dramatic decline over recent years. Families are attending concerts far less, there is a decline in listening to the radio, and families are less likely to go to museums or the theater. The NEA survey shows

.....continued p.3

OUR NON-PROFIT BOARD

Music Director
Dr Andrew Smith

President
Bob Clair
Treasurer
Barry Blake
Secretary
Eric Friedrichsen

Brooke Coleman
Michele Cloutier
Brook Porter
Jonathan Steinberg
Ex-Officio
Joseph Adajian
Adam Adelpopf
Tami Weiser

INSIDE THIS ISSUE:

OFFICE WELCOME	2
LINCOLN CENTER	2
2008 EVENTS	2
BOARD RECOGNITION	2
PARENT SURVEY	2
LONGTERM PLANS	3
FALL RECITALS	3
SCHOOL CALENDAR	4
FACULTY NEWS	4

FAMILY HALLOWEEN CONCERT & PARTY

We have a special Halloween Celebration coming up this weekend October, Friday 24th - Sunday 26th. The weekend of free events for all the family continues our successful concert and party last year at Westport Library.

We have a treat in store with this years Halloween concert and party at 2pm on Saturday 25th October. This year we will be performing on the green at Saugatuck Congregational Church in the center of Westport. The concert marks the

culminating event in a special string weekend with guest Suzuki teacher, Linda Fiore. Many parents know Linda as Director of the Ogontz Summer Suzuki Institute and professor of Suzuki at the Hartt School. Students will have a chance to take group violin class with her and there will be an array of master classes starting on Friday evening. As part of our efforts to bring free events to our students, parents and faculty, Linda will also be spending time with our teachers for a professional renewal session .

For more details on the different events consult your teacher or ask in our office.

A big thanks to Miss Sarah and Tanya Shively for all their organizational efforts put into this event.



OFFICE WELCOME



Heather Saikowski & Terri Coutrone

A big welcome to Heather Saikowski and Terrianne Cutrone who joined us in July running the vital operations of our front office.

As office manager, Heather is known to many of you through her sterling work during the scheduling for Fall registration but she is also a tech

wizard and is helping us renovate our computing systems. Heather was born in Connecticut and trained as a music student, working in music and modeling management in New Orleans and New York before coming to the school. Terri is a Norwalk local and has done bookkeeping for many local businesses.

If you have experience with advanced computer networking and windows server systems and would like to help Heather please contact us at heather.s@smsw.org.

LINCOLN PHOTOS

We are very pleased to finally have official photos from our trip to Lincoln Center in May 2008. it seems like many months ago but the photos bring the day's events flooding back. You can view and purchase photos, commemorative greeting cards, even a photo mouse pad from the trip.

You can also put in orders for a special T-Shirt celebrating the performance from our website.

Go to

www.smsw.org/lincoln.htm

for your ordering instructions



2008 CALENDAR OF EVENTS

You don't have to go to New York with your family for great music. This year, as last, we have a fantastic line up of world class artists coming to teach and play at the school! You can visit our online calendar or pick up a calendar of events at the front office for details of the exciting happenings this year.

The school's season of events opened in mid-September with the brilliant young pianist Marko Mustonen playing in our Pillow Concert Series. In the Pillow Concert Series this year we are featuring an array of Suzuki instrument. We have violinist Dr. Andrew, pianists Miss

Soojung, Miss Elina and marko Mustonen, guitarist Mr. Daniel and cellists Miss Andrea, Miss Sylvan, An-Lin Barden and Pam Devenport. It's a wonderful series for children of all ages to come and see music being played up close in our recital room. Tickets are \$15 & \$0

If you didn't know it already, our special Halloween concert and party for all the family is this weekend. The educational part of the weekend is a visit by renowned Suzuki specialist, Linda Fiore who will be working with students and teachers alike. In addition to Linda, this year we have also invited Suzuki specialists

Pam Devenport and Ed Sprunger, who many of you may know from his book "Helping Parents Practice". Their visits are tied to various free activities throughout the year in which your child and you are invited to take part. We are also using their visits for our teachers for training and renewal sessions.

Of course our main concert events of the year lie in our Da Capo Visiting Artist Series. Our 08-09 roster will bring the dynamic young Vinca Quartet as ensemble in residence . It is the first time we have had an ensemble-in-residence at

.....continued p.3

COME AND HEAR DR. SMITH AND MISS SOOJUNG IN A PILLOW CONCERT PERFORMANCE FOR ALL THE FAMILY

3PM SUNDAY 2ND NOVEMBER, RECITAL ROOM,

TICKETS \$15, \$10



Retiring Board President Adam Adelpkof

SUZUKI BOARD OF DIRECTORS

A huge thanks to Adam Adelpkof, who stepped down from our board in August after several years serving as President. Adam's dedication to the school has been wholehearted and before his period as President he worked tirelessly guiding the school through difficult times. Adam played a key role in bringing Dr. Smith to the school in 2005 and has worked hard to shepherd the school through numerous changes. Adam has two children studying at the school in violin and cello.

In addition we would like to thank

Raj Singh for his work as Treasurer over the last year. Raj's expanded work commitments made it difficult for him to continue his role as Treasurer but he and his wife continue to play an important role in the school. We thank him for his hard work and dedication.

In September, we welcomed to the board three talented and dedicated parents, Barry Blake, Michele Cloutier and Brook Porter.

If you would like to consider offering your gifts to our non-profit we would welcome your help!

PARENT SURVEY

To help parents prepare for their teacher conferences in November, we have prepared a brief survey that will help you gather your thoughts about the education your child is receiving at the Suzuki Music School of Westport. In addition, the survey will provide the school with feedback on areas we need to improve and areas that are working well. We ask that each family take 15 minutes to fill the survey out before conferences. The surveys are anonymous and a great way for you to prepare for conference while helping the school. An email link will be sent to you the week before conferences.

DIRECTOR'S CORNER CONT'D FROM PAGE 1

that this decline is echoed in a drop in reading among young adults, an increase in obesity and physical inactivity across the country and a decline in community volunteerism. You should be proud that your family has made the choice to participate in the arts through Suzuki.

While Fairfield County is blest with a wealth of artistic opportunities few can lay claim, as the Suzuki School does, to the pastoral way in which we approach educating the whole child and the way in which our goals are bound up with achieving life goals.

Quality music making is a bi-product of teaching children how to tackle problems, both physical and mental. In the Suzuki method we believe this

is best done in a family environment and our job as music teachers is to help you help your child.

As a school we are grateful for your support of this ideal. Our mission is to strive to improve and provide this service for many years to come.

This year, we have produced an impressive array of activities for you and your family - activities to help your child and the children of Fairfield County become more immersed in the creative arts. As a Suzuki school we believe, as Dr. Suzuki constantly preached, that it is simply not good enough to engage in music through instrumental lessons but rather to immerse yourself in music.. Attend concerts, listen to CD's, listen

to the radio. As those behind the NEA study would agree, Dr. Suzuki was not far wrong - music does change a society!

In the difficult year ahead, I would encourage you to visit our school calendar (posted on our website, www.smsw.org), and available in our office, or to look at the WSHU community calendar of events and find ways of bringing music into your child's life. The school hosts an exciting line up of extra activities designed for all the family and many of them are free. Free master classes with major artists and teachers. Free community concerts for your family and free classes to help your child build their confi-

dence. In addition we have many low cost concerts with world class artists all here on your doorstep. This is the advantage of being a part of the Suzuki school, a part we would love for you to take advantage of with your children., Invigorate their experience of creative arts education! Increase the potential of your child's future and bring your family together in fun and creative ways!

Best wishes for an artistic year ahead with your family!

Andrew Smith

FALL RECITALS

We are very grateful to Anna Mase for her help in securing Steinway Recital Room for our November Recitals. The school now holds recitals three times a year to accommodate the growing needs of our students. Fall recitals used to stretch a month but this year we have been able to keep our recitals to November 8th, 9th and 15th by using three venues: Town Hall, Steinway Recital Room and our own Recital Room. Be sure to check the time and location for your recital. You can find details on our website or if you are in doubt talk to your teacher or ask in our front office. For studios who require

piano accompaniment times are limited and filling up fast as the recitals approach.

School Expectations for Recitals

- *not all students need take part in recitals each time we have them.*

- *if your child is a beginner please bring them to see a recital before expecting them to play.*

- *some instruments require piano accompaniment (ask your teacher if you are in doubt). All children who require accompaniment **must** have rehearsed at least once before with the piano. Not doing so is unfair on*

your child!

- *if you can not make the entire recital, we ask that you switch to another recital that you can make - coming late or leaving early sets an extremely bad example to your child that the school does not condone.*

- *the purpose of recitals is to teach your child to respect their peers' performance as well as give them an opportunity to showcase their hard work. Please help us help your child by teaching them and showing them good concert etiquette.*

- *consider a sitter for newborns!*

FREE LESSONS??

Sounds too good to be true? Maybe not! Our fundraising team are finding ways of saving you money with their plans for a Fall raffle. Enter our upcoming raffle to win free lessons for your child this spring! The winning ticket will be drawn at our Vivaldi candlelight concert on December 7th. Ask for tickets in our front office!

LONGTERM PLANS

The school's Board of Directors and Dr. Andrew have been investigating the feasibility of a long-term location for the school based in central Westport. A top priority to ensuring the long-term future of the school is to acknowledge the need for a location that will also enable SMSW to have fine facilities that will accommodate its growing enrollment.

Over the last six months a feasibility study has been undertaken with Saugatuck Congregational Church on Post Road to allow the school to renovate and take over

the church's east wing. The church is one of the largest landowners in central Westport and has long been known for its generosity towards community activities. The plan would allow for considerable expansion of the school's facilities and a purposed design would include lots and lots of parking spaces - something that is clearly a problem in our current facility!

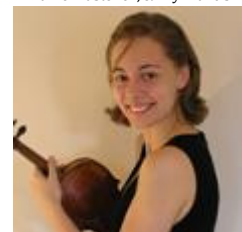
The study, still in its infancy, has been given its blessing by the church community. We would love to hear ideas and reactions from our school community.

08 EVENTS CONT'D FROM PAGE 2

the school and in addition to their performance they will be giving classes throughout the year. In addition, the young Suzuki prodigy, Lilly Francis, artist-in-residence at the Lincoln Center will give a performance on violin day in March. We kick off the Da Capo events with a special family concert on December 7th, 5pm - a candlelight performance of Vivaldi's Four Seasons with Dr. Andrew, Dr. Nina, and visiting violinists, Lu Sun and Anthea Kreston performing and featuring the wonderful art and poetry of our children. Come and join us for this family event at Saugatuck Church. Tickets \$25 & \$10



Marko Mustonen, & Lily Francis



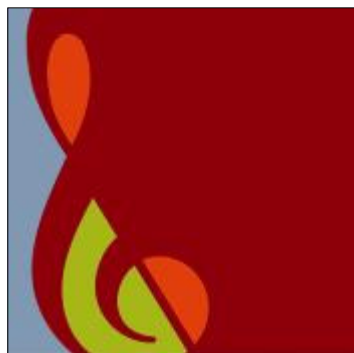
SUZUKI MUSIC SCHOOL OF WESTPORT

212 Post Road West
Westport, CT
06880

Phone: 203.227.9474
Fax: 203.227.3104
E-mail: office@smsw.org

WE'RE ON THE WEB AT
WWW.SMSW.ORG

FOR SNOW CLOSURES VISIT OUR WEBSITE
OR CALL (203) 227 9474



DISCOVERING JOY THROUGH MUSIC ...

STUDIO COMMUNITIES

if you are interested in helping your studio or becoming a studio parent please email Michele Cloutier-Dantas at michele_cloutier@hotmail.com

UPCOMING EVENTS

OCTOBER

FRIDAY 24TH @ 3PM TO 7PM
Guest Suzuki Teacher Linda Fiore, gives master class for violin and viola students. All welcome to observe.
Admission Free, Recital Room

SATURDAY 25TH @ 9AM TO 12PM
Linda Fiore takes group violin class
All welcome
Admission Free, Recital Room

SATURDAY 25TH @ 2PM
Halloween Concert and Party,
Saugatuck Congregational Church,

SATURDAY 25TH TO FRIDAY 31ST
Halloween Costume Days, wear your best costume to class (parents welcome to join in!)

NOVEMBER

SATURDAY 1ST @ 3PM
Performance Hour with Miss Soojung
Sign-up for a space on our notice board

SUNDAY 2ND @ 3PM
Dr. Smith & Miss Soojung perform a pillow concert for all the family
Recital Room Tickets \$15 & 10

TUESDAY 4TH
Election Day School Closed

SATURDAY 8TH
Fall Recitals
*Please refer to our online calendar for times and locations.
Please consult your teacher about piano accompaniment*
Town Hall: Sarah, Sylvan, Lisa, Andrew,
Recital Room: Julie, Aaron
Steinway Gallery: Elina, Narina, Soojung, Julie

SUNDAY 9TH
Fall Recitals
Town Hall: Jerilyne, Astrid, Rie

SATURDAY 15TH
Fall Recitals
Recital Room: Dan, Annalisa, Nina, Amy

MONDAY 10TH TO SATURDAY 15TH
Parent Teacher Week - chat with your teacher about your child's lessons

SATURDAY 22ND @ 3PM
Suzuki Graduation Day

SUNDAY 23RD TO SUNDAY 30TH
Thanksgiving Break - School Closed

DECEMBER

SATURDAY 6TH @ 1PM
Da Capo Master Class with the Vinca Quartet, artists-in-Residence

SATURDAY 6TH @ 3PM
Performance Hour with Miss Soojung

SUNDAY 7TH @ 5PM
Da Capo Visiting Artist Series
Vivaldi's Four Seasons by Candlelight with seasonal poetry read by Suzuki students.
Saugatuck Congregational Church
Tickets \$25 & 10

SATURDAY 13TH @ 6PM
Fall Honors Recital - see inspiring performances by selected students
Steinway Gallery, Admission Free

SUNDAY 14TH @ 3PM
Fall Chamber Music Recital
Westport Town Hall, Admission Free

FACULTY NEWS

Congratulations to **Miss Lisa**, who is expecting her second child in February!

Miss Sarah & Miss Sylvan attended the 2008 Suzuki Conference in May supported by the school's professional development fund and by the generous support from parents in Miss Sylvan's cello studios. This was the first time the school has been able to send teachers to the conference. This year our presence there was doubly important. As well as giving Miss Sarah and Miss Sylvan to catch up on all the latest changes that are being put into the new editions of the Suzuki Books, they had an opportunity to cheer on cello student, Julian Shively, who had been chosen from students nationally to participate in the special conference orchestra.

Tricordes - The Faculty Ensemble featuring Daniel Corr on Guitar,

Andrea Mills on Cello and Andrew Smith on violin are beginning their Autumn season with performances at East Haven Public Library, Gateway Community College, The Whitney Center in Hamden and Stamford.

Dr. Andrew has been invited to give a series of master classes and concerts at Winston-Salem State University and the Winston-Salem School system in November.

Miss Amy is giving a series of local concerts in Manchester and Hartford with her rock band

Maximo Hombre in preparation for their upcoming cd release

Miss Sarah has been invited to as guest Suzuki artist take part in a special weekend workshop at the Suzuki Academy of Wilmington Delaware

Miss Andrea is returning for her sixth season as a member of the Sarasota opera Company in January.

Miss Lisa & Miss Soojung were sponsored by the school to take part in summer Suzuki teacher training. Miss Soojung took her book 1 piano training and Miss Lisa received book 1 Suzuki voice training, a brand new course in the Suzuki world. This puts Miss Lisa at the forefront of Suzuki education in America as one of the very few registered Suzuki voice teachers. We hope to be offering the course very soon!

Dr. Andrew & Miss Andrea will be performing at Queens College, Brooklyn in November in a special premier of a quintet for oboe and strings by Mozart arranged by his contemporary Rosinack. On the same program Dr. Andrew will perform Bach's the concerto for violin & oboe.



TAKE PART IN OUR SPECIAL FAMILY VIVALDI FOUR SEASONS BY CANDLELIGHT DECEMBER 7TH

HELP YOU CHILD PRODUCE AN ARTISTIC REACTION TO THEIR FAVORITE SEASON TO DISPLAY AT THE CONCERT - POEMS, PICTURES AND STORIES WELCOME.

TICKETS \$25, \$10